

### Aspirating Smoke Detector (including SSD 31)



**SEC-ASD-531** 1 Sampling pipe / Detector

The SecuriRAS SEC-ASD-531 aspirating smoke detector is designed for smaller monitoring areas and for the easiest possible handling. The SEC-ASD-531 is equipped with a highly sensitive smoke sensor SSD 31 using a single sampling pipe network. The housing provides the option for two expansion modules. Commissioning and configuration is done directly on the device without any software tool. For planning the ASD PipeFlow software allows an optimized design of any installation.

Technical data	
Mains voltage:	14 to 30 V DC
Ambient temperature:	-10 °C to + 55 °C
Protection class:	IP 54
Dimensions (H x W x D) :	195 x 290 x 140 mm
Case cover material:	ABS-Blend, UL 94-V0
Case Colour:	grey/anthracite
Weight:	1,95 kg
Standards:	EN 54-20 Class A, B and C, EN 54-27 UL 268, FM 3230
Maximum sampling pipe length:	75 metres
Monitoring area:	720 m <sup>2</sup>
Application:	Single IT racks, small tele-communications containers, elevator shafts, clean rooms, false ceilings etc.

### Aspirating Smoke Detector



**SEC-ASD-532** 1 Sampling pipe / Detector, 1 Smoke level display

The SecuriRAS SEC-ASD-532 aspirating smoke detector is designed for small to midsize monitoring areas. The SEC-ASD-532 base unit is provided for a highly sensitive smoke sensor SSD 532 (to be ordered separately) for a single sampling pipe network. The measured smoke level is indicated on a bar graph display. The housing provides the option for two expansion modules. Commissioning and configuration is done either directly on the device or via the ASD Config software tool. For planning the ASD PipeFlow software allows an optimized design of any installation.

Technical data	
Mains voltage:	14 to 30 V DC
Ambient temperature:	-20 °C to + 60 °C
Protection class:	IP 54
Dimensions (H x W x D) :	195 x 290 x 140 mm
Case cover material:	ABS-Blend, UL 94-V0
Case Colour:	grey/anthracite
Weight:	1,7 kg
Standards :	EN 54-20 Class A, B and C, EN 54-27
Maximum sampling pipe length:	120 metres
Monitoring area:	1280 m <sup>2</sup>
Application:	Elevator shafts, prison cells, clean rooms, laboratories, IT racks, tele-communications, facilities etc.

### Aspirating Smoke Detector



SEC-ASD-535-1



SEC-ASD-535-2



SEC-ASD-535-3



SEC-ASD-535-4

- SEC-ASD-535-1** 1 Sampling pipe / Detector
- SEC-ASD-535-2** 2 Sampling pipes / Detectors
- SEC-ASD-535-3** 1 Sampling pipe / Detector, 1 Smoke level display
- SEC-ASD-535-4** 2 Sampling pipes / Detectors, 2 Smoke level displays

The SecuriRAS SEC-ASD-535 aspirating smoke detector is designed for universal applications mainly for midsize to large monitoring areas. The SEC-ASD-535 base units provide space for 1 or 2 highly sensitive smoke sensors SSD 535 (to be ordered separately) for 1 or 2 sampling pipe networks. The measured smoke level can be indicated on a bar graph display (models -3 and -4). The housing provides the option for four expansion modules. Commissioning and configuration is done either directly on the device or via the ASD Config software tool. For planning the ASD PipeFlow software allows an optimized design of any installation.

Technical data	
Mains voltage:	10.5 to 30 V DC
Ambient temperature:	-30 °C to + 60 °C
Protection class:	IP 54
Dimensions (H x W x D) :	397 x 265 x 148 mm
Case cover material:	ABS-Blend, UL 94-V0
Case Colour:	grey/anthracite
Weight:	3,85 kg
Standards:	EN 54-20 Class A, B and C
VdS-Approval:	G 208154
Noise level:	32 dBA: extremely low noise levels
Maximum sampling pipe length:	300 metres
Monitoring area:	5760 m <sup>2</sup>
Application:	High-bay and deep-freeze warehouse, large data centres, historic buildings, large/high halls etc.



## Smoke Sensor for SEC-ASD-531

**SEC-SSD-31** Alarm Sensitivity range  
0,02% – 10% /m

The smoke sensor SSD 31 is pre-installed in the SEC-ASD-531 and is also available also as replacement part. 3 Pre-signals are set on a fixed percentage of the alarm threshold (30/50/70%).

### Technical data

Sensitivity range alarm:	0.02 %/m – 10 %/m
Sensitivity range pre-signals:	0.006 %/m – 7 %/m
Ambient temperature:	-10 °C to + 55 °C
Dimensions (H x W x D):	120 x 116 x 95 mm



## Smoke Sensor for SEC-ASD-532

**SEC-SSD-532-3** Alarm Sensitivity range  
0.02% – 10% /m

The smoke sensor SSD 532 has to be ordered separately for the SEC-ASD-532.  
3 Pre-signals can be set between 10 and 90% of the alarm threshold.

### Technical data

Sensitivity range alarm:	0.02 %/m – 10 %/m
Sensitivity range pre-signals:	0.002 %/m – 9 %/m
Ambient temperature:	-20 °C to + 60 °C
Dimensions (H x W x D):	120 x 116 x 95 mm



## Smoke Sensor for SEC-ASD-535

**SEC-SSD-535-3** Alarm Sensitivity range  
0.02 – 10% /m

The smoke sensor SSD 535 has to be ordered separately for the SEC-ASD-535.  
Pre-signals can be set between 10 and 90% of the alarm threshold.

### Technical data

Sensitivity alarm:	0.02 %/m – 10 %/m
Sensitivity range pre-signals:	0.002 %/m – 9 %/m
Ambient temperature:	-30 °C to + 60 °C
Dimensions (H x W x D):	120 x 136 x 95 mm



## Fastener plate to cover a smoke sensor chamber

**SEC-ASD-535-Verschl**

The fastener plate is for closing the 2nd channel when it is temporarily not used. (e.g. Conversion of a room)

The packaging unit of the fastener plate is 50 pieces.

## PVC FITTINGS



## Compressed-air connection

**SEC-CC-25-PVC**

Compressed-air connection for tube  
TU 25 PVC for cleaning the aspirating tube.

### Technical data

Material:	PVC
Colour:	grey
Diameter:	25 mm



## Ventilation duct flange

**SEC-DF-25-PVC**

Flange for tube TU 25 PVC for the monitoring of ventilation ducts.  
Per duct 3 pieces of DF 25 PVC are required, 2 for the aspirating stub,  
1 for the air recirculation.  
Please consider the planning hints.

### Technical data

Material:	PVC
Colour:	grey
Diameter:	25 mm



### Loop I/F module for SEC-ASD-535

#### SEC-SLM-35 SecuriLine standard

This loop interface brings faults and alarms to your fire alarm panel and lets you reset the SEC-ASD-535 by the panel. Note: SEC-ASD configuration is done via USB using ASD config software and a PC. The module comes with mounting brackets, screws and ribbon cable.

#### Technical data

Dimensions (H x W x D) :	95x58x17 mm
Weight:	56 g



### Relay I/F module for SEC-ASD-535

#### SEC-RIM-35 5 relays with changeover contacts

The RIM 35 brings five (5) additional relay outputs to your SEC-ASD-535. Expansion limit is two (2) RIM 35 / 10 relays. Each relay can be assigned to any ASD event by programming with the ASD Config software. The module comes with mounting brackets, screws and ribbon cable.

#### Technical data

Max. relay output load:	50 / 1 / 30 V DC/A/W
Dimensions H x W x D) :	95x58x17 mm
Weight:	85 g



### Relay I/F module for Special Fire Detectors

#### SEC-RIM-36

The RIM 36 brings five (5) additional relay outputs to your Special Fire Detector (except SEC-ASD-535). Expansion limit is two (2) RIM 35 / 10 relays. Each relay can be assigned to any ASD event by programming with the SEC-ASD Config software. The module comes with mounting brackets, screws and ribbon cable.

#### Technical data

Max. relay output load:	50 / 1 / 30 V DC/A/W
Dimensions (H x W x D) :	95x58x17 mm
Weight:	85 g



### Memory card module for SEC-ASD-535

#### SEC-MCM-35

This Memory Card Module lets you trace up to 16 Million events and stores analogue values like smoke concentration and airflow of at least 83 days depending on the log interval. The module comes with mounting brackets, screws and ribbon cables and SD-Industrial memory card.

#### Technical data

Dimensions (H x W x D) :	95x58x17 mm
Weight:	43 g



### SD-Card Industrial 2GB

#### SEC-SD-Industrial

SD memory card (industrial) 2GB to use with MCM 35 or directly on-board in SEC-ASD-531 (AMB 31) and SEC-ASD-532 (AMB 32).

#### Technical data

Memory:	2 GB
Temperature range:	- 40°C - + 85°C



### Serial I/F Module networking of Special Fire Detectors

#### SEC-SIM-35

For the RS 485 networking of up to 250 Special Fire Detectors like SEC-ASD-535 or SEC-ASD-532. Using the "ASD Config" configuration software, all SEC-ASDs in the network can be visualised and configured from a PC. The module comes with mounting brackets, screws and ribbon cables.

#### Technical data

Dimensions (H x W x D) :	95x58x17 mm
Weight:	56 g



### Serial Master Module for networking of Special Fire Detectors

#### SEC-SMM-535

This interface connects the RS485 (over SIM 35) networked SEC-ASDs to a USB port of a PC. It is powered by the USB port.

#### Technical data

Power Supply:	USB powered / 5 VDC
Operating temperature:	-30°C to +60°C
Dimensions (H x W x D):	82x89x55 mm
Weight:	165 g

### SEC-ASD planning and calculation software

#### SEC-ASD-PipeFlow

Planning and calculation software for planning symmetric and asymmetric sampling pipe topologies. (Subject to licence)

#### Technical data (requirements)

Operating system:	Windows XP / 7 / 8.1
RAM:	1 GB
Hard disc space required:	50 MB



### SEC-ASD configuration tool license with USB Dongle

**SEC-D&PL\_ASD-Conf\_N** Dongle & Partner License ASD Config Networking



### SEC-ASD configuration tool license with USB Dongle

**SEC-D&PL\_ASD-Conf** Dongle & Partner License ASD Config



### USB 2.0 cable for connection between SEC-ASD-535 and PC

#### SEC-KAB-USB-45

USB 2.0 cable for connection between SEC-ASD-535 and PC for commissioning and maintenance via ASD Config

#### Technical data

Length:	4.5m
Type:	A-B

## SAMPLING POINTS



### Sampling hole clip

SEC-Clip x.x PA

**SEC-CLIP 2.0 PA**

**SEC-CLIP 2.5 PA**

**SEC-CLIP 3.0 PA**

**SEC-CLIP 3.5 PA**

**SEC-CLIP 4.0 PA**

**SEC-CLIP 4.5 PA**

**SEC-CLIP 5.0 PA**

**SEC-CLIP 5.5 PA**

**SEC-CLIP 6.0 PA**

**SEC-CLIP 6.5 PA**

**SEC-CLIP 7.0 PA**

\* Also available in white

Sampling hole on aspirating pipe (clip). Available with different diameter according to the project data.

Only for PVC and ABS pipes with 25 mm diameter  
Packaging unit: 10 pieces

#### Technical data

Hole diameter	Type
2.0 mm	SEC-CLIP 2.0 PA
2.5 mm	SEC-CLIP 2.5 PA
3.0 mm	SEC-CLIP 3.0 PA
3.5 mm	SEC-CLIP 3.5 PA
4.0 mm	SEC-CLIP 4.0 PA
4.5 mm	SEC-CLIP 4.5 PA
5.0 mm	SEC-CLIP 5.0 PA
5.5 mm	SEC-CLIP 5.5 PA
6.0 mm	SEC-CLIP 6.0 PA
6.5 mm	SEC-CLIP 6.5 PA
7.0 mm	SEC-CLIP 7.0 PA



### Maintenance clip

**SEC-Clip-REV PA**

Clip without hole for revision purpose.  
Packaging unit: 10 pieces

#### Technical data

Pipe connection:	25 mm
Material:	PA



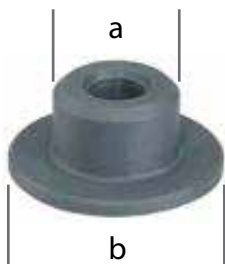
**Sampling-funnel**

**SEC-SF-ABS**

Sampling-funnel for tubes TU 25XXX. For sampling points exposed to high air current like monitoring of server racks or air conditioners.

*Technical data*

Pipe connection:	25 mm
Hole diameter:	5 mm
Material:	ABS



**Rosette for sampling tube stiff**

**SEC-SP-36-PVC**

**SEC-SP-36-ABS**

For tubes TU 25 PVC/ABS to create the sampling point type "sampling tube stiff with rosette". Has to be glued into the tubes TU 25 PVC or ABS. Various outer diameters (b) on demand available.

*Technical data*

Diameter a:	21.5 mm
Diameter b:	36 mm
Material:	PVC / ABS
Packaging unit:	10 pieces



**Sampling point for ceiling duct**

**SEC-SP-M20-PVC**

**SEC-SP-M20-ABS**

Sampling point for ceiling ducts to connect flex sampling pipe (FT 21 PA.). To connect the flex sampling pipe FT 21 PA. Inclusive self sealing coupling SC 20ST PA.

*Technical data*

Material:	PVC / ABS
Colour:	white / grey
Diameter:	M20, 36mm



**Sampling point for ceiling duct (Set)**

**SEC-SP-M20-PVC-Set**

**SEC-SP-M20-ABS-Set**

Sampling point for ceiling ducts. Complete set incl. T-Piece TP 25XXX, flex sampling pipe (FT 21 PA) and sampling point (SP M20 XXX).

*Technical data*

Material:	PVC
Length sampling stub:	0.8 m



**Sampling point Capillary (set)**

**SEC-SP-TU6-PVC-Set**

To create the sampling point type "Capillary". Complete capillary tube-set for the installation in sampling pipes TU 25 PVC. Incl. T-piece TP 25 PVC, reduction RE 25-6 PVC and capillary stub 1.5m.

*Technical data*

Length:	1.5 m
Colour:	gray, RAL 7011
Diameter outside:	6 mm
Diameter inside:	4 mm



**Sampling point with heating**



- SEC-HEAT-3.0-PVC** red
- SEC-HEAT-3.5-PVC** blue
- SEC-HEAT-4.0-PVC** green
- SEC-HEAT-4.5-PVC** black
- SEC-HEAT-5.0-PVC** brown

To install the aspirating pipe in deep-freeze rooms to prevent the freezing of the aspirating holes. HEAT X.X is the relevant diameter for SEC-ASD PipeFlow-calculations (3.0/3.5/4.0/4.5/5.0mm)

*Technical data*

Pipe connection:	25 mm
Hole Diameter	Type
5,7 mm	HEAT 3.0 PVC
6,1 mm	HEAT 3.5 PVC
6,3 mm	HEAT 4.0 PVC
6,7 mm	HEAT 4.5 PVC
7,1 mm	HEAT 5.0 PVC

**Sampling point with heating**



- SEC-HEAT-3.0-ABS** red
- SEC-HEAT-3.5-ABS** blue
- SEC-HEAT-4.0-ABS** green
- SEC-HEAT-4.5-ABS** black
- SEC-HEAT-5.0-ABS** brown

Same as HEAT X.X PVC but in ABS.

*Technical data*

Pipe connection:	25 mm
Hole Diameter	Type
5,7 mm	HEAT 3.0 ABS
6,1 mm	HEAT 3.5 ABS
6,3 mm	HEAT 4.0 ABS
6,7 mm	HEAT 4.5 ABS
7,1 mm	HEAT 5.0 ABS

**Heat Resistor**



**SEC-Heat-Resistor**

Replacement for the sampling point with heating HEAT X.X PVC/ABS.

*Technical data*

Resistor:	220 Ω
-----------	-------

**Cable connection fitting**



**SEC-CCF-25-PVC**

**SEC-CCF-25-ABS**

Cable connection fitting set for T-junctions of the tubes in deep-freeze rooms.

*Technical data*

Pipe connection diameter:	25 mm
---------------------------	-------

**Silicon litz wire**



**SEC-SLW-0.5-wt** (white)

**SEC-SLW-0.5-bk** (black)

Silicon litz wire 0.5mm<sup>2</sup> to connect the heating resistors in the heating nozzles HEAT X.X PVC/ABS.

Order quantity must be a multiple of 100.

*Technical data*

Length:	1 m
Packaging unit:	100 pieces

**Wiring connection unit**



**SEC-WCU-535**

For the introduction of the supply of the sampling point with heating into the aspirating tube, with internal clamps. For more details please see the guidelines for deep freeze-warehouses.

*Technical data*

Dimensions (H x W x D):	80 x 82 x 85 mm
Material:	PC
Pipe connection diameter:	25 mm
Weight:	317g

**NOTE:** A full range of ASD pipes and fitting are available.



**Manual ball valve**

**SEC-MV-25-PVC**

**SEC-MV-25-ABS**

Manual ball valve for revision and cleaning works with compressed air.

*Technical data*

Material:	PVC
Pipe connection diameter:	25 mm



**Detector Box**

**SEC-REK 511**

For the localization of a fire in a separate room, when a single SEC-ASD is monitoring several rooms. To use together with the SSD 515-Xs smoke detector. Has to be installed in every stub, which leads to a single room from the main tube.

*Technical data*

Operating voltage:	18-28 VDC
Ambient temperature:	0 °C to + 50 °C
Dimensions (H x W x D):	186 x 122 x 85 mm



**Scattered light smoke detector for SEC-REK 511**

**SEC-SSD-515-1S** sensitivity 1.2%/m

**SEC-SSD-515-2S** sensitivity 0.6%/m

**SEC-SSD-515-3S** sensitivity 0.3%/m

*Technical data*

Operating voltage:	18 to 28VDC
Ambient temperature:	-20 °C to + 60 °C
Protection class:	IP 44
Case colour:	white
Dimensions (D x H):	80 x 56mm

The SSD 515-xS (Scattered Light Smoke Detector) is the smoke sensor for the accessory device SEC-REK 511 (full addressing) for the Aspirating Smoke Detector of the SEC-ASD and RAS product family. The SSD 515-xS operates according to the scattered light principle and is designed so that it optimally meets the specific requirements of smoke detection in association with an Aspirating Smoke Detector. The detector has alarm threshold tracking and is additionally available with various sensitivities. By choosing the appropriate detector sensitivity, application-specific detection properties of the Aspirating Smoke Detector are possible.



**Filter box small**

**SEC-FBS-25-PC**

Filter box small including filter-mat. Inserted into the sampling pipe before SEC-ASD. To be used in slightly dusty rooms.

*Technical data*

Dimensions (H x W x D):	80 x 82 x 85 mm
Material:	PC
Pipe connection diameter:	25 mm



**Filter mat small for filter box small**

**SEC-FBS-25-PC-EFM-5er**

Filter-mat for filter box small. Packaging of 5 pieces

*Technical data*

Dimensions (H x W x D):	80 x 80 x 20 mm
-------------------------	-----------------



**Filter box large**

**SEC-FBL-25-PC**

Filter box large including filter-mat. Inserted into the sampling pipe before SEC-ASD. To be used in dusty rooms.

*Technical data*

Dimensions (H x W x D):	120 x 122 x 85 mm
Material:	PC
Pipe connection diameter:	25 mm



**Filter mat large for filter box large**

**SEC-FBL-25-PC-EFM-5er**

Replacement filter mat for the filter box large. Packaging of 5 pieces

*Technical data*

Dimensions (H x W x D):	117 x 80 x 80 mm
-------------------------	------------------



**Filter box extra large**

**SEC-FBX-25-PC**

Filter box extra large including 2 filter-mats and 1 holder for the filter-mat. Inserted into the sampling pipe before SEC-ASD. To be used in very dusty rooms.

*Technical data*

Dimensions (H x W x D):	250 x 160 x 90 mm
Material:	PC
Pipe connection diameter:	25 mm



**Filter mat for filter box extra large**

**SEC-Filter-Mat-X**

Filter-mat for filter box extra large. Packaging of one piece.

*Technical data*

Dimensions (H x W x D):	155 x 85 x 65 mm
-------------------------	------------------



**Holder for Filter-Mat X**

**SEC-Holder-Filter-Mat-X**

1 holder is included in the FBX 25 PC for the filter-mat at the bottom side.



**Dust filter unit large**

**SEC-DFU-535L**

Dust filter unit large. To be used in dusty rooms. Inserted into the sampling pipe before SEC-ASD.

*Technical data*

Dimensions (H x W x D):	165 x 220 x 220 mm
Material:	steel 37, black
Pipe connection diameter:	40/25 mm
Weight :	1600g



**Replacement cartridge for DFU 535L**

**SEC-DFU-535L-RC**

Replacement cartridge for dust filter unit large.

*Technical data*

Weight :	170g
----------	------



**Dust filter unit extra large**

**SEC-DFU-535XL**

Dust filter unit extra large. To be used in very dusty rooms. Inserted into the sampling pipe before SEC-ASD.

*Technical data*

Dimensions (H x W x D):	230 x 250 x 250 mm
Material:	steel 37, black
Pipe connection diameter:	40/25 mm
Weight:	2000g



**Replacement cartridge for DFU 535XL**

**SEC-DFU-535XL-RC**

Replacement cartridge for dust filter unit extra large.

*Technical data*

Weight :	520g
----------	------





**Water retaining box**

**SEC-WRB-25-PVC**

**SEC-WRB-25-ABS**

Water retaining box standard  
Used in rooms with high humidity.  
Inserted into the sampling pipe before  
DTB 25 PC (when used), any types of  
dust filters (when used) and SEC-ASD.

*Technical data*

Dimensions (H x W x D):	335 x 250 x 90 mm
Material:	PC
Pipe connection diameter:	25 mm



**Air cooler and water separator**

**SEC-LK-35-PVC**

**SEC-LK-35-ABS**

Is used as an air cooler when the  
sampling pipe is in a room >60°C.  
Can also be used as a water separator  
in rooms with high amount of air  
humidity and / or condensing water  
because of temperature differences.  
For more details see the technical  
documentation.

*Technical data*

Dimensions (H x W x D):	1000 x 730 x 80 mm
Material:	Copper pipe d=22x1 mm
Weight:	8 Kg
VdS-Approval:	G208154
CPD-Approval:	0768-CPD-20600



**Detonation flame arrester**

**SEC-DFA-25-3**

Detonation flame arrester for explosion zones.  
Equipment category IIC. 2 pieces are needed  
per sampling tube. For more details see the  
technical documentation.

*Technical data*

Pipe connection diameter:	25 mm
---------------------------	-------



**Detonation flame arrester**

**SEC-DFA-25-2**

Same as DFA 25-3 but equipment category IIB.

*Technical data*

Pipe connection diameter:	25 mm
---------------------------	-------



**Detonation flame arrester**

**SEC-DFA-25-1**

Same as DFA 25-3 but equipment category IIA.

*Technical data*

Pipe connection diameter:	25 mm
---------------------------	-------



**Noise reduction housing**

**SEC-Insulation-housing**

The noise insulation housing is used as an  
accessory part for the aspirating smoke  
detector ASD 535 in areas where a low level  
of noise is required. If the ventilator noise  
from the aspirating smoke detector is found  
to be disruptive and changing the location of  
the evaluation unit is not possible, the  
aspirating smoke detector can be integrated  
into a noise insulation housing.

*Technical data*

Sound pressure level:	20 dB (A)
Dimensions (H x W x D) :	500 x 500 x 300 mm
Material:	Steel sheet
Weight :	21,5 kg
Protection class:	IP 54



**Additional housing for SecuriRAS SEC-ASD-535**

**SEC-ASD-Housing-Ex**

The additional housing is designed for the  
integration of an aspirating smoke detector  
SEC-ASD-535. The additional housing  
should be used as additional personal  
protection in explosive areas. If there is  
danger of operations related damage (e.g.  
lift truck operations) to the aspirating smoke  
detector, the additional housing can serve  
as a mechanical protection measure.

*Technical data*

Material:	Steel sheet
Dimensions (H x W x D):	500 x 500 x 300 mm
Weight:	21 kg
Protection class:	IP 54



### Main board for SEC-ASD-531

#### SEC-AMB-31

Repair exchange for the SEC-ASD-531.

#### Technical data

Dimensions (H x W x D): 250 x 160 x 15 mm



### Main board for SEC-ASD-532

#### SEC-AMB-32

Repair exchange for the SEC-ASD-532.

#### Technical data

Dimensions (H x W x D): 250 x 160 x 15 mm



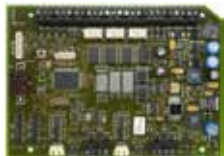
### Main board for SEC-ASD-535-1 and -3

#### SEC-AMB-35-1

Repair exchange for the SEC-ASD-535-1 and -3.

#### Technical data

Dimensions (H x W x D): 125 x 176 x 20 mm



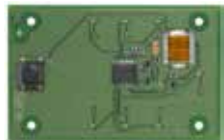
### Main board for SEC-ASD-535-2 and -4

#### SEC-AMB-35-2

Repair exchange for the SEC-ASD-535-2 and -4.

#### Technical data

Dimensions (H x W x D): 125 x 176 x 20 mm



### Basic control board for standard display of SEC-ASD-535-1 and -2

#### SEC-BCB-35

Repair exchange for the standard display unit (without smoke level display)

#### Technical data

Dimensions (H x W x D): 90 x 59 x 9 mm



### Basic control board for advanced display of SEC-ASD-535-3 and -4

#### SEC-ACB-35

Repair exchange for the advance display unit (with smoke level display)

#### Technical data

Dimensions (H x W x D): 90 x 142 x 9 mm



### Air flow sensor for SEC-ASD-531 and SEC-ASD-532

#### SEC-AFS-32

Repair exchange for air flow sensor for SEC-ASD-531 / 532 incl. connection wire



### Air flow sensor for SEC-ASD-535

#### SEC-AFS-35

Repair exchange for air flow sensor for SEC-ASD-535 incl. connection wire

#### Technical data

Dimensions (H x W x D): 15 x 14 x 115 mm



### Aspirating fan unit for SEC-ASD-531 and SEC-ASD-532

#### SEC-AFU-32

Repair exchange for the aspirating fan unit complete for SEC-ASD-531 / 532



### Aspirating fan unit for SEC-ASD-535

#### SEC-AFU-35

Repair exchange for the aspirating fan unit complete for SEC-ASD-535.

#### Technical data

Dimensions (H x W x D): 138 x 185 x 58 mm



### Rotary Snap Lock for SEC-ASD-531/532/535

#### SEC-RSL-35

Repair exchange for the SEC-ASD-531/532/535 housing.

#### Technical data

Material: ABS / steel

Packaging unit: 4 pieces



### Insect protection screen for SEC-ASD-531/532/535

#### SEC-IPS-35

Insect protection screen for the SEC-ASD-531/532/535 housing.

#### Technical data

Material: steel

Packaging unit: 2 pieces